

COMPULITE

Vector PC Wing

Firmware Update Version 0.37, 0.61
Release Notes & Installation Guide

Release Date: 26/4/2018

Compulite Systems (2000) Ltd.

9 Hanagar St. Neve Ne'eman B Industrial Zone Hod Hasharon, 4501310, Israel

Tel: 972 9 744 6555 ~ Fax: 972 9 746 6515 ~ www.Compulite.com

Copyright © 2018 Compulite Systems (2000) Ltd. All rights reserved.

This guide is delivered subject to the following conditions and restrictions:

This product or document is protected by copyright and distributed under licenses restricting its use, copying, distribution and decompilation. No part of this product or document may be reproduced in any form by any means without the prior express written authorization of Compulite Systems (2000) Ltd. and its licensors (if any). Information contained herein is subject to change without notice.



1 Table of Contents

1	Table of Contents	2
2	Version Highlights	3
3	Installing Firmware	4
	Getting Started	4

2 Version Highlights

This version includes the following feature:

- PC Wing is now able to choose which console it will connect to.

Details:

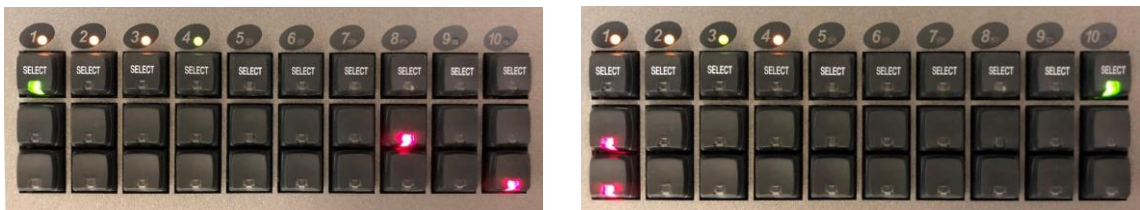
When turning on the PC Wing it will scan the network and will show the available IPs as described below.

The LEDs above the PBs will display the available console IPs in the network. Green LED color means that the shown IP belongs to this option. Orange LED color means that there is another console IP in the network that can be shown by pressing the select button of that PB.

When selecting a console, the IP is displayed by the LEDs on the buttons. These LEDs display the third number of the IP (the Console ID) by using the three rows of the PB buttons. Each row is a digit of the third number of the IP.

For example: if the Console ID is 180, the first row will be lit under PB number 1, the second row will be lit under PB number 8, and the third row will be lit under PB number 10. In the attached picture#1 you can see an example of Console ID = 180, and in picture#2 there is an example of Console ID = 11.

In order to connect to the desired console, you need to select it from the options and then hit the [Enter] button.



There are 2 types of PC Wing panels:

1. Revision C.
2. Revision D.

The latest Firmware version for Revision C is T025V037.S.

The latest Firmware version for Revision D is T025V061.S.

In order to know which revision you have and get the Firmware version that fits to your PC Wing please contact support@compulite.com.

See [installing new firmware](#) instructions.

3 Installing Firmware

The following procedure is for updating the Firmware on the Vector PC Wing.

Before proceeding please make sure of the following:

- An alphanumeric keyboard is attached
- An external mouse is connected to the Vector system

ATTENTION!

- This update is **ONLY** for Vector software version **3.20R02** and above.
- Make sure to follow the installation instructions in full.
- To view the update progress, open the RT monitor by double clicking on the cog-wheel sign.
- If you encounter any problems, please contact your local distributor or contact the Compulite support team: support@compulite.com

Getting Started

Before installing the Firmware update, please check that you have the following:

- A running and working Vector console or PC with software version 3.20R02 and above. The software version can be viewed from Tools ► RT Status.
- The new Firmware file according to your PC Wing revision (T025V037.S or T025V058.S)
- The PC Wing needs to be connected via an Ethernet hub to the Vector network (Data port):

To connect the Wing to the network hub

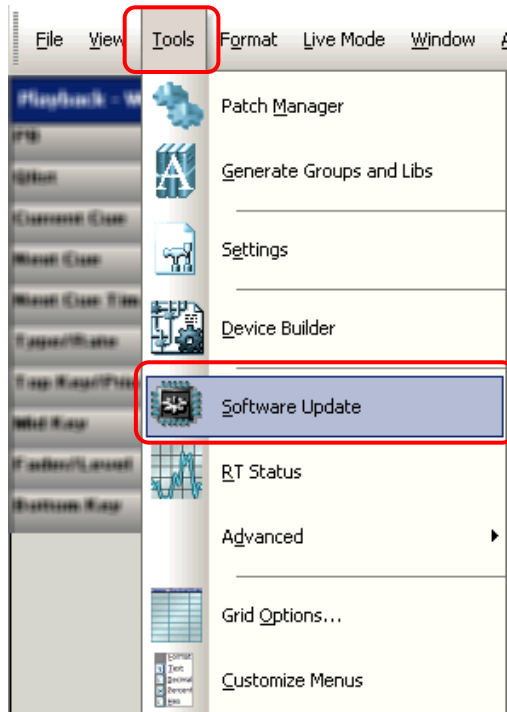
1. Connect a regular Ethernet cable from the Vector Data port or the Ethernet port on a Vector PC to the Ethernet hub.
2. Connect a regular Ethernet cable from the PC Wing to the same Ethernet hub as the console or vector PC.

To install firmware

1. Save a copy of your show file.
2. Stop any DMX transmission via Ethernet (VC, Art-Net or sACN).
3. Copy the Firmware file to a USB stick or portable device.

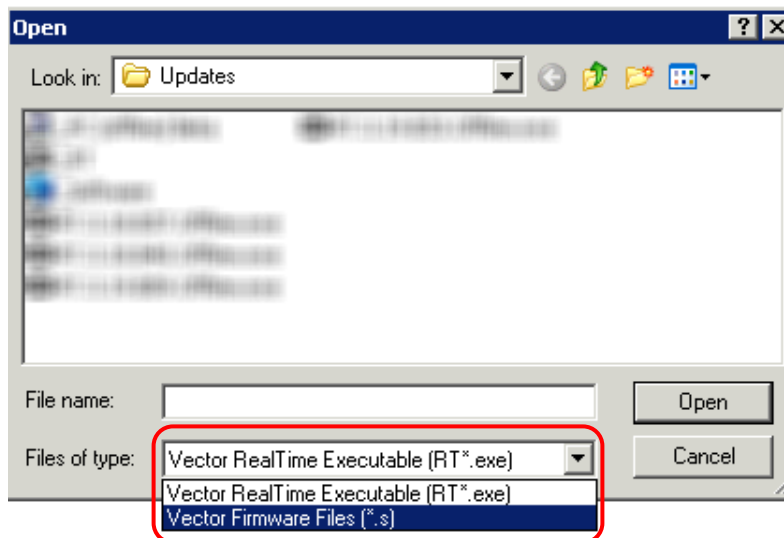
Do not run the Firmware update from the USB or portable device!

4. Copy the Firmware file from the USB or portable device to the Vector Updates folder:
 - For Vector console: *D:\Program Files\Compulite Vector\Config\Updates*
 - For Vector PC: *C:\Program Files\Compulite\ Vector Pc\Config\Updates*
5. Make sure the Vector console or Vector PC is ON.
6. From Vectors menu bar click on Tools ► Software Update.

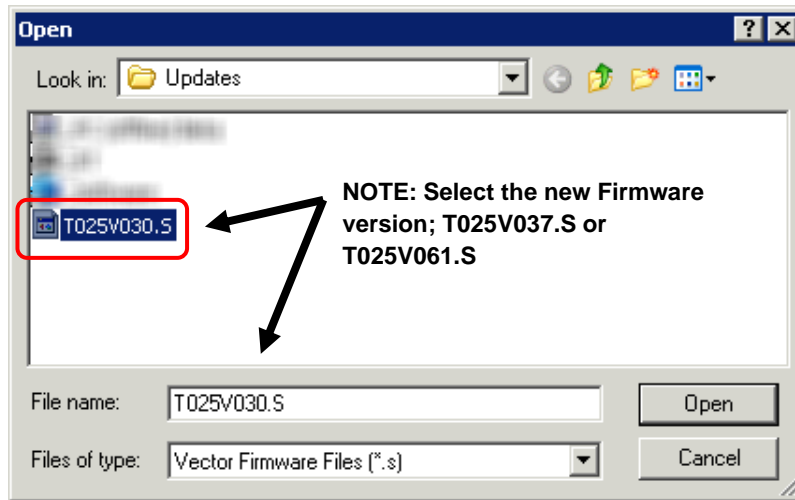


The Update dialog window opens.

7. From the Update dialog box click on the Files of Type drop down list and select Vector Firmware Files(*.s).



8. Select the new Firmware update file (**T025V032.S** or **T025V055.S**) and then click Open to start the Update.



9. The Update will begin and the message "Restarting RT..." will be displayed in the command line.

Restarting RT...

The update takes approximately 1 minute. The update progress can be monitored in the RT window.

Note: Some LED's on the PC Wing may light up during the update and then turn off when the update is complete.

Note: If the LED's do not turn off after a while (2 min or more) then re-load the firmware file again.

10. When the update is done shutdown the system and re-start the software.